



No. D43D15 Scale 1:50,000

Grid reference table showing coordinates for various map sheets (D43D10 to D43E4).

भारतीय सर्वेक्षण विभाग SURVEY OF INDIA

1st Edition 2010. Price : Rs. 50/-

CONVENTIONAL SYMBOLS table listing symbols for roads, rivers, railways, and other features.

REFERENCE: NH 63 National Highway No. 63.

NOTES: Heights are in metres and above Indian mean sea level. Contours are approximate.

COMPILATION INDEX: A. Surveyed during 2004-05.

Projection - UTM Datum - WGS 84. Magnetic Variation from True North about 1 1/2° West in 2005.

For further details about this map, please contact Director, Karnataka Geo-Spatial Data Centre, Survey of India, Koramangala II Block, Bangalore.

WEBSITE - www.surveyofindia.gov.in

Reproduction in whole or part by any means is prohibited without the written permission of Survey of India, the National Mapping Agency.

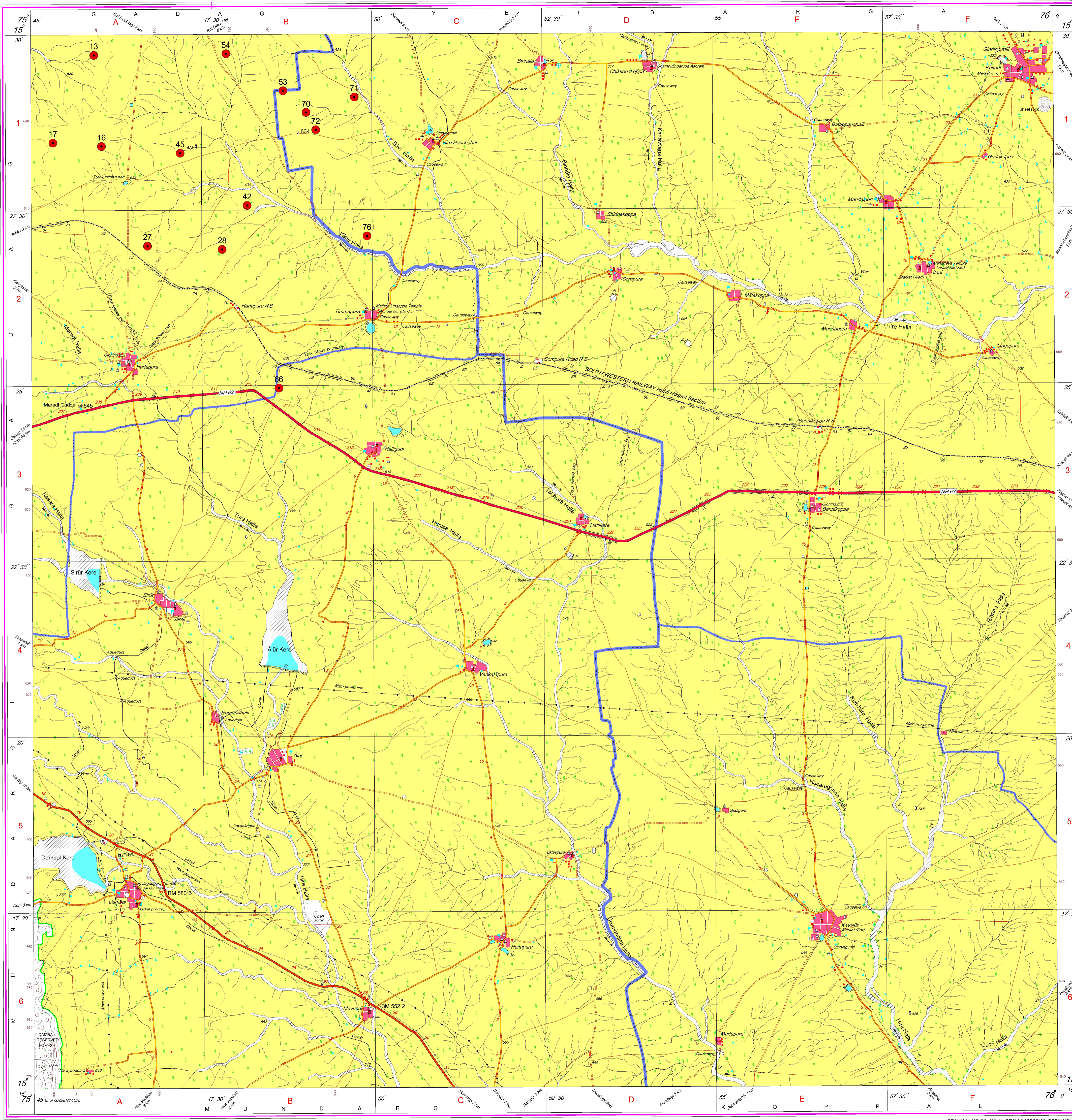


Table with 7 columns: Sr. No., WTG ID, Survey no., Village/Taluk/District, Latitude, Longitude, Elevation in AMSL (M), Distance from DRDO Challakere ATR (KM), Bearing from DRDO Challakere ATR (Degree), Remarks.

From DRDO Challakere ATR, Farthest Point (4) is 151.33 Km and Azimuth of (4) from DRDO Challakere ATR is 324° 9' 0". From DRDO Challakere ATR, Nearest Point (66) is 139.56 Km and Azimuth of (66) from DRDO Challakere ATR is 324° 56' 24". The Highest Level point is (16) & AMSL is 643.73M. The Lowest Level point is (70) & AMSL is 608.89M.